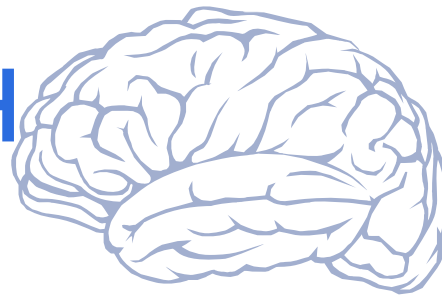


CERTIFICATE IN PUBLIC HEALTH AND COGNITIVE AGING



This certificate program is available to qualified students currently enrolled in a Master's or PhD at the University of Pennsylvania who have acquired a body of knowledge that is key to improving the health and psychosocial outcomes for our aging population.

This multi-disciplinary certificate is housed in Penn's MPH program, but draws from courses in the School of Social Policy & Practice, School of Nursing, and the Perelman School of Medicine. This program is directed by Jason Karlawish, MD, Professor of Medicine, Medical Ethics and Health Policy, and Neurology, and Co-Director of the Penn Memory Center (PMC).

Students in a wide range of graduate programs are eligible including, but not limited to, the Schools of Nursing and Social Policy and Practice as well as the Neuroscience Graduate Group and of course the Master of Public Health Program at the Perelman School of Medicine.

Course Requirements

- PUBH 589 "The Alzheimer's Crisis: why it happened and what we can do about it"
- PUBH 502 "Introduction to Principles and Methods of Epidemiology" or other relevant epidemiology course
- A course related to public policy, law, ethics, and healthcare management. (Courses already approved are PUBH 505: "Public Health Policy & Administration" and PUBH 507: "Public Health Law & Ethics")
- An elective relevant to public health and cognitive aging

Additional Requirements

- Attend at least five PMC consensus conferences, at which clinicians review patient diagnoses
- Attend or view recordings of at least five PMC didactic presentations given by PMC clinicians, faculty or staff or invited researchers
- An oral or written presentation

How to Apply:

To apply for this certificate program, you will need to submit:

- Unofficial Penn transcripts
- Resume
- Approval from Graduate Program director and academic advisor

Gain a unique interdisciplinary perspective of cognitive aging and public health that will help you advance your academic and professional goals

- A brief (one-page) essay outlining how the courses and other requirements will train you to develop expertise in the public health dimensions of cognitive aging

Please submit materials to Kathy Jedrziwski at jedrzmk@pennmedicine.upenn.edu.

